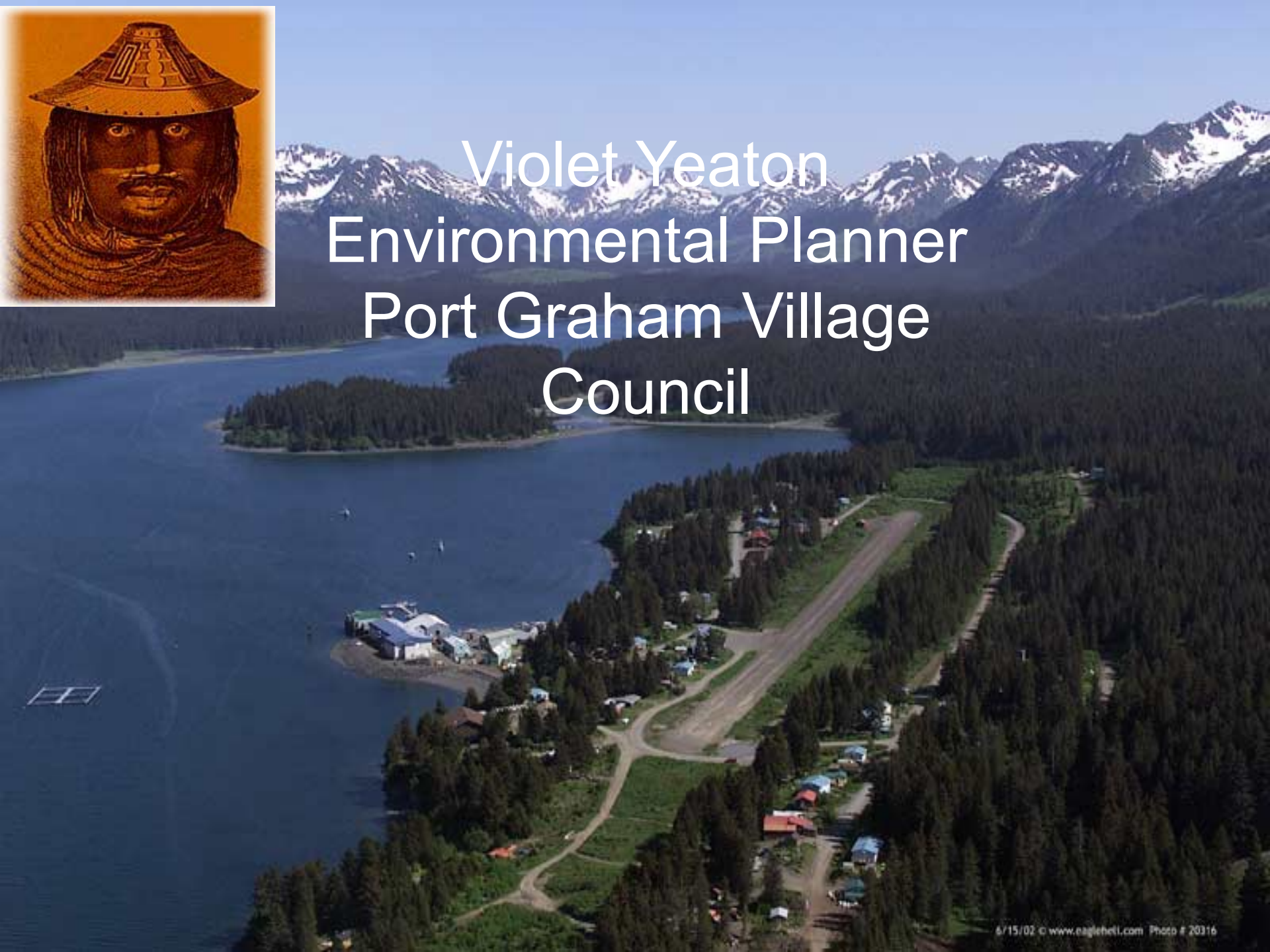




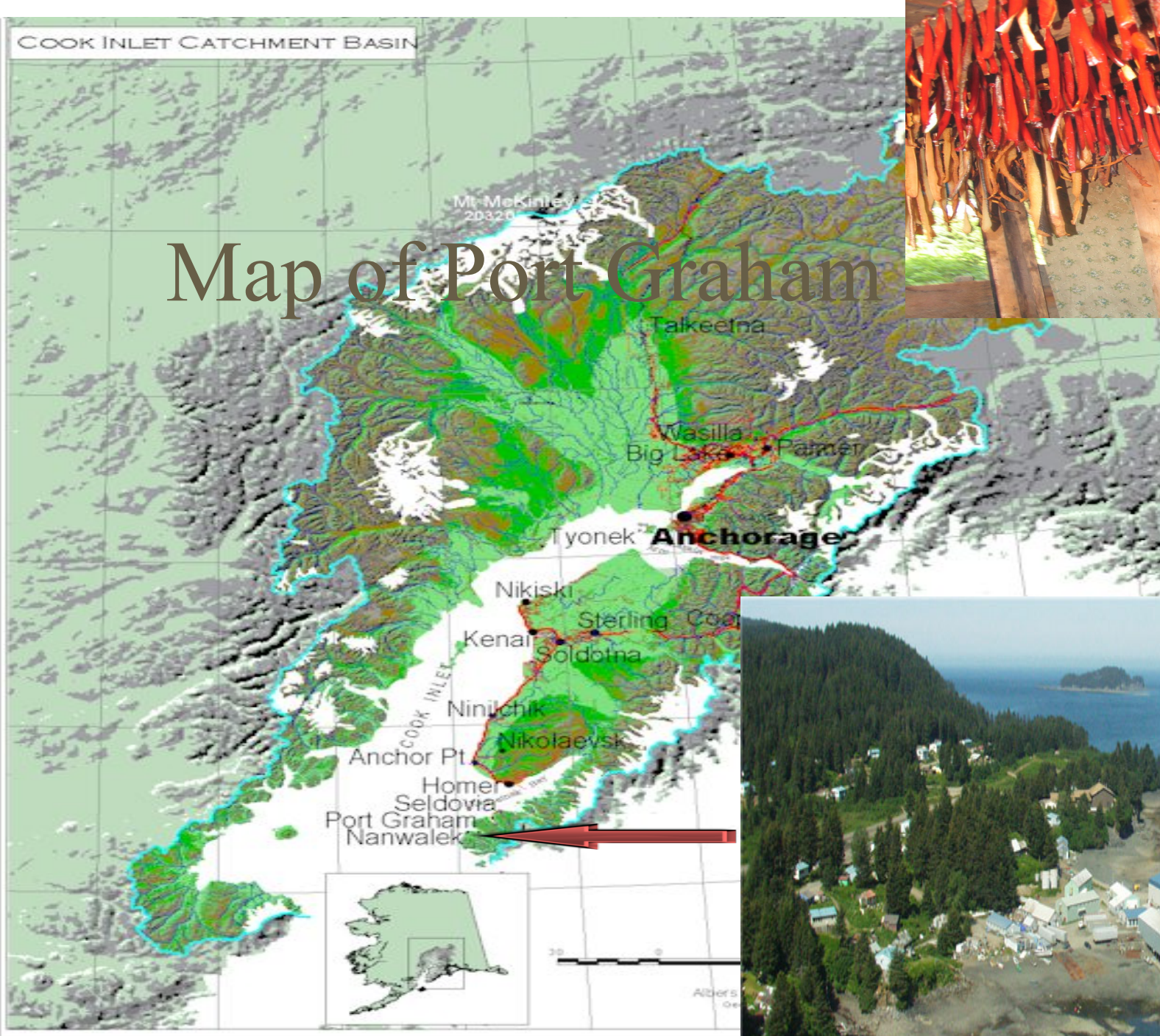
# Violet Yeaton Environmental Planner Port Graham Village Council





COOK INLET CATCHMENT BASIN

# Map of Port Graham





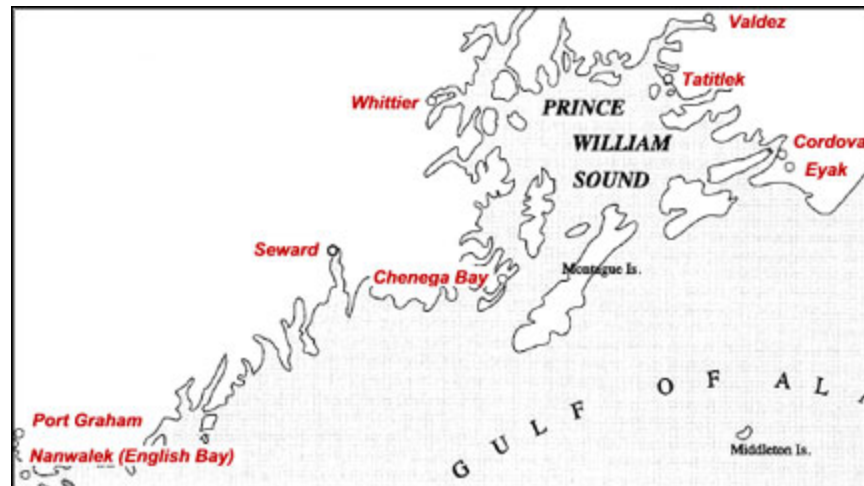


# The Sugpiat People

## A Brief History of the Chugach Region

The Alutiiq people were the predominant culture, settling Prince William Sound more than five thousand years ago. The eastern portion of the region was also occupied by a smaller nation of Eyak Athabaskans who migrated down the Copper River in cottonwood canoes.

Archaeological diggings show that the Chugach people have occupied this area for thousands of years, from the time when the Sound was still largely covered by glaciers during the last ice age. They were also the first Alaskans to meet the European explorer, Vitus Bering, who came to Alaska at Kayak Island in 1741 under the Russian flag. Since the founding of Fort Saint Constantine at Nuchek Village in 1793, the Russian culture has played an important role in Chugach history.





# Port Graham Village Council

- The Port Graham Tribal Council is a federally recognized Indian Tribe that serves the Alutiq people of Port Graham. The village Council operates a variety of social, cultural and community, environmental and economic development programs designed to enhance the quality of life within Port Graham.

The Cook Inlet watershed is a ecosystem covering 47,000 square miles of Southcentral Alaska. Drainage from Mt McKinley, the Chugach Mountains and the Aleutian Range drains into rivers of Susitna, Matanuska and Kenai, which feed the waters of Cook Inlet.





# History/Issues Addressing

- Oil-n-Gas Development in Cook Inlet Watershed since 1957



- NPDES Permit Program was established after the Clean Water Act of 1972
- 1972 Coastal Zone Management Program (AMSA Designation/1992
- Earthquake 1964 (land subsided approx 4ft)
- King Crab fishery closed in 1982
- Tanner Crab fishery closed in 1995
- Beluga Whale listed as depleted in 1998
- Exxon Valdez Oilspill in 1989 of 11 million gallons of crude oil

## Issues/Questions/Concerns from Tribal Members

- How are the sea otters impacting our traditional foods (clams/bidarki)
- How is the diet of the sea otter changing as our traditional foods are being depleted
- What research do we need to focus on to look at the marine resources in our bay (we have limited resources)
- Climate Change is a huge concern for our people?
- What do we need to do to protect our traditional way of life?



# Quyana (Thank you)

